

PLAT II OF BARWOOD

IN SECTION 31, TOWNSHIP 47 SOUTH, RANGE 42 EAST
PALM BEACH COUNTY, FLORIDA

BEING A REPLAT OF A PORTION OF TRACTS 29,30 & 31, BLOCK 82, PALM BEACH FARMS CO., PLAT NO. 3,
RECORDED IN PLAT BOOK 2, PAGE 53, PUBLIC RECORDS OF PALM BEACH COUNTY, FLORIDA
IN 2 SHEETS SHEET NO. 2

28

STATE OF FLORIDA }
COUNTY OF PALM BEACH } ss
This Plat was filed for record at _____ M.
this _____ day of _____
19 _____, and duly recorded in Plat Book No. _____
on page _____
JOHN B. DUNKLE, Clerk Circuit Court
By _____, D. C.

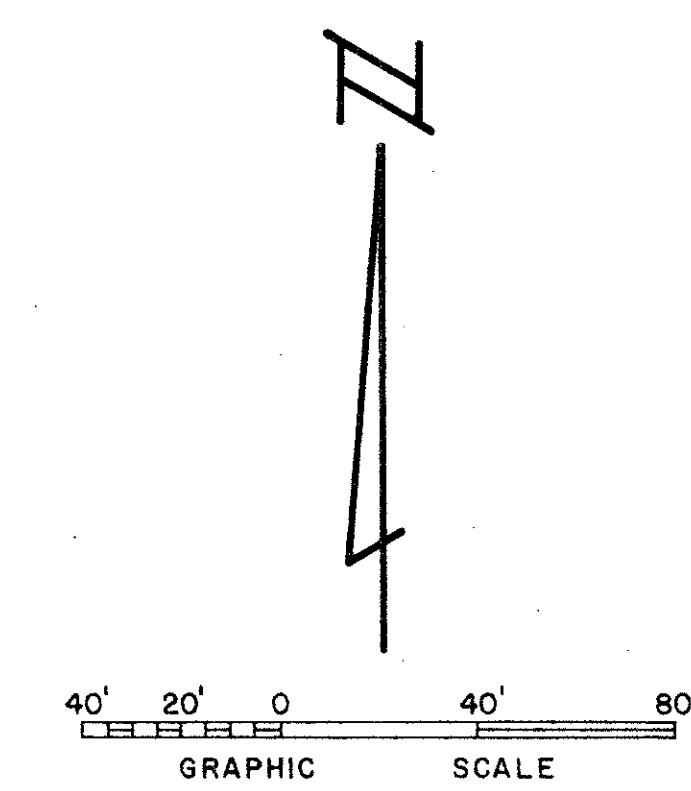
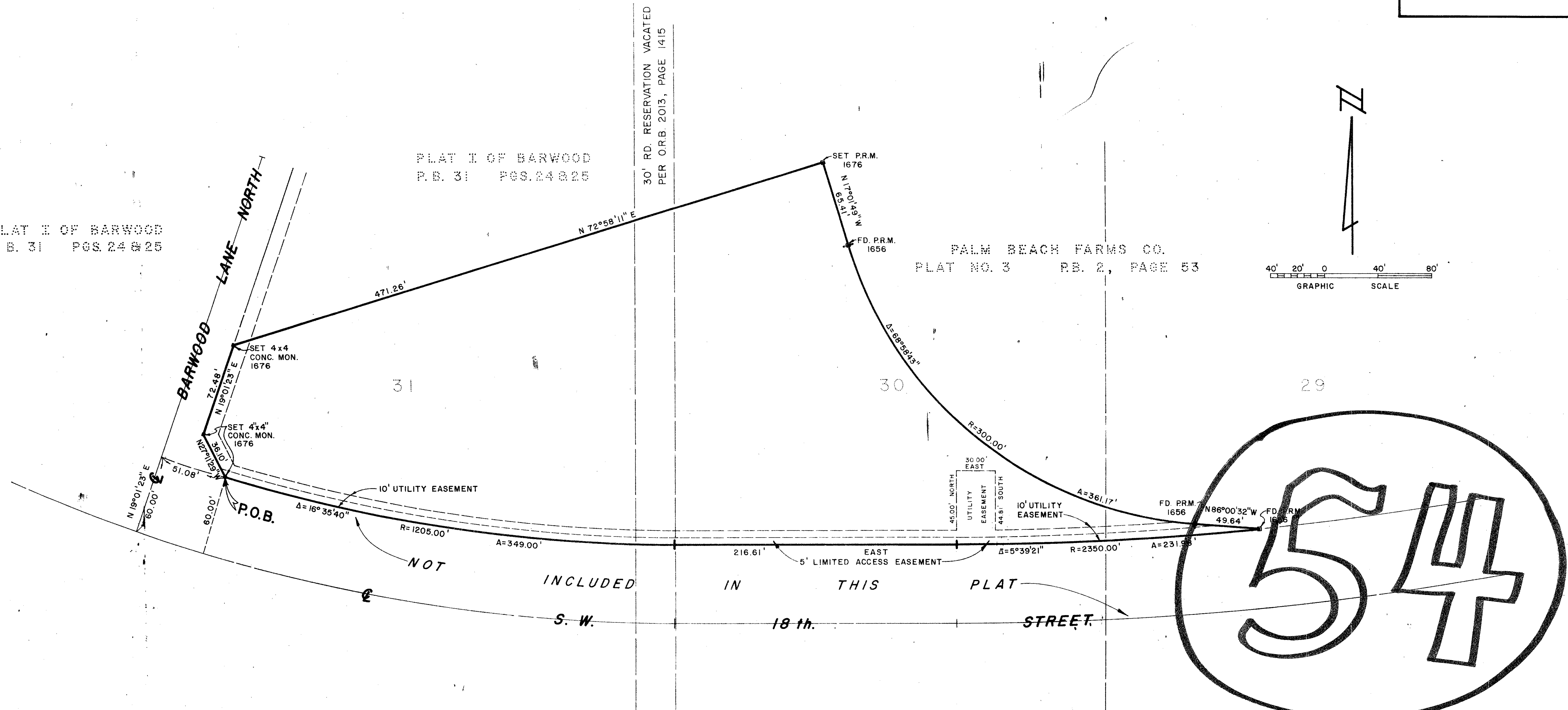
PLAT I OF BARWOOD
P.B. 31 PAGES 24 & 25

PLAT I OF BARWOOD
P.B. 31 PAGES 24 & 25

30' RD. RESERVATION VACATED
PER O.R.B. 2013, PAGE 1415

PALM BEACH FARMS CO.
PLAT NO. 3 P.B. 2, PAGE 53

PALM BEACH FARMS CO.
PLAT NO. 3 P.B. 2, PAGE 53



54

PLAT #2
OF
BARWOOD

0527-303 33 28

31/47/42

THIS INSTRUMENT WAS PREPARED BY GEORGE C. PANOS IN THE OFFICE OF

FLORIDA SURVEYING & MAPPING, INC.
REGISTERED LAND SURVEYORS
WEST PALM BEACH, FLORIDA 33401

ROSS AND MALAVASI ENGINEERS, INC.
WEST PALM BEACH, FLORIDA

PLAT I OF BARWOOD
PALM BEACH COUNTY, FLORIDA
IN 2 SHEETS SHEET NO. 2

Date	FEBRUARY, 1977	Designed	Scale	1" = 40'	Sheet
Drawn	F. McELROY	Job No.	4000-77		2 of 2
Checked		File No.	S-1055-000-B		